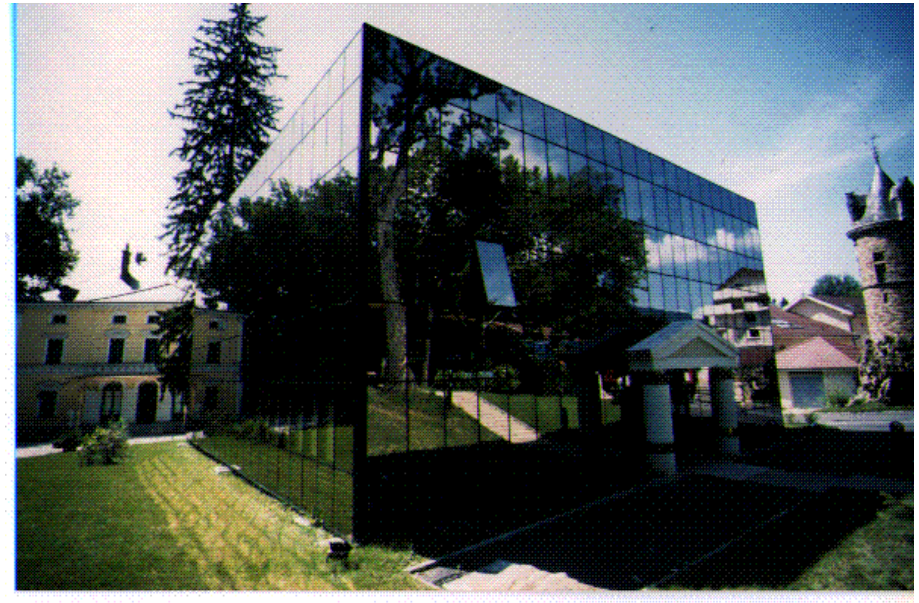


VIP Visitor support by contextual information



Martin Muehlenbrock

Contextual Computing & Devices and Intermediation
XRCE, Grenoble

Xerox Research Center Europe, Grenoble

- History of XRCE
 - Grenoble lab created 1993
 - established as a "satellite" of PARC
 - Cambridge lab (1988 - 2002)
- Mission
 - Combine technology, business processes and work practices to help people work smarter and faster
- Research groups
 - Contextual Computing & Devices and Intermediation (used to be Coordination Technologies)
 - Content Analysis (Machine Learning)
 - Work Practices
 - Image Processing
 - Advanced Technologies and Systems



Past and Present XRCE Applications

Forget-Me-Not (early 90s)

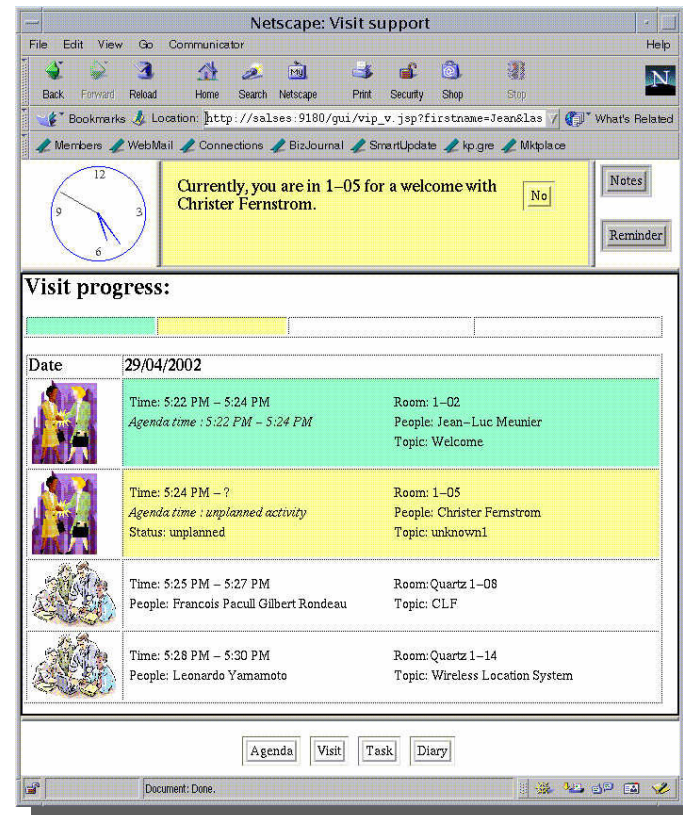
- Traces people's actions
- Indexes information by the setting in which it is encountered for later retrieval



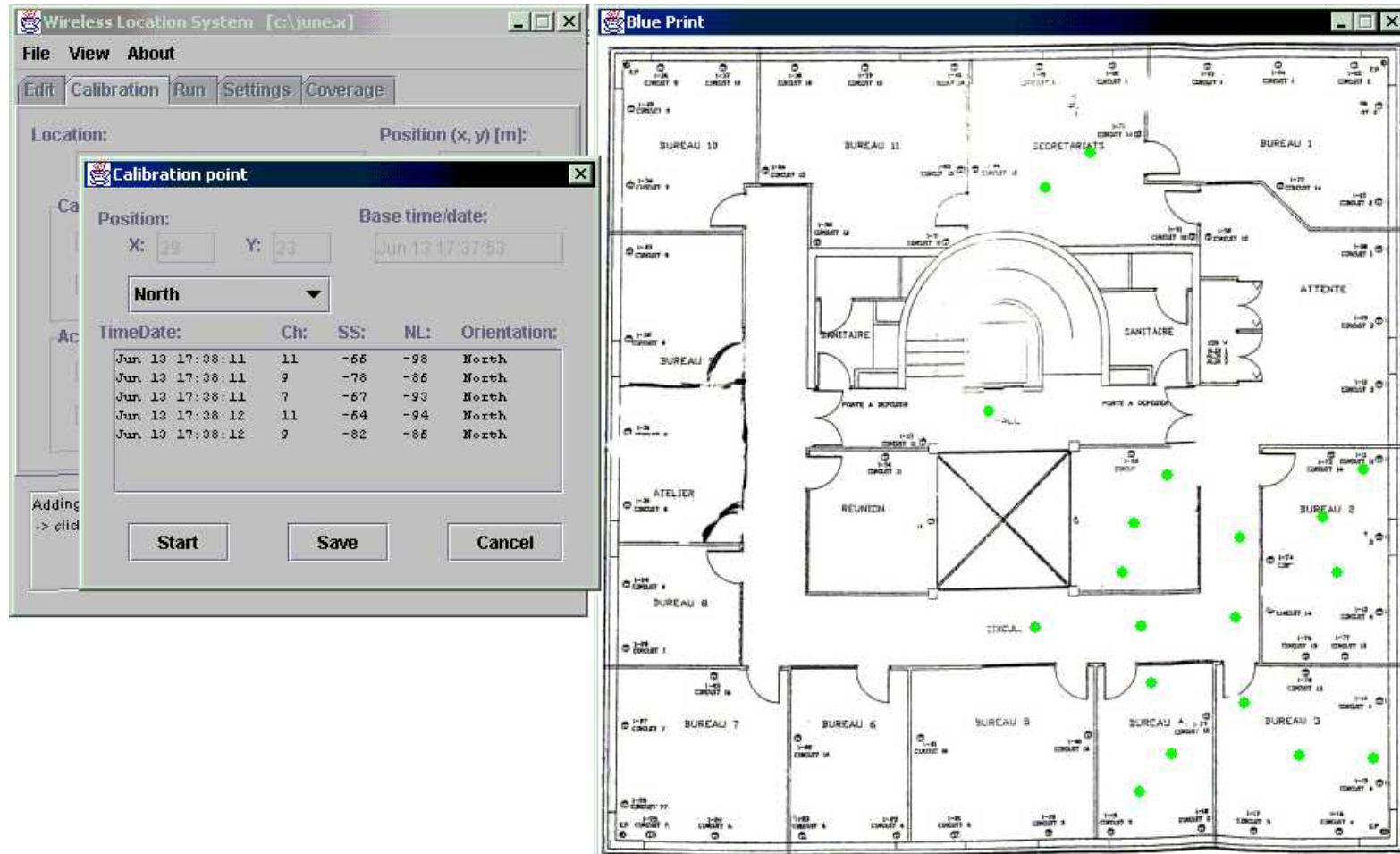
PARC tab

VIP (pilot application)

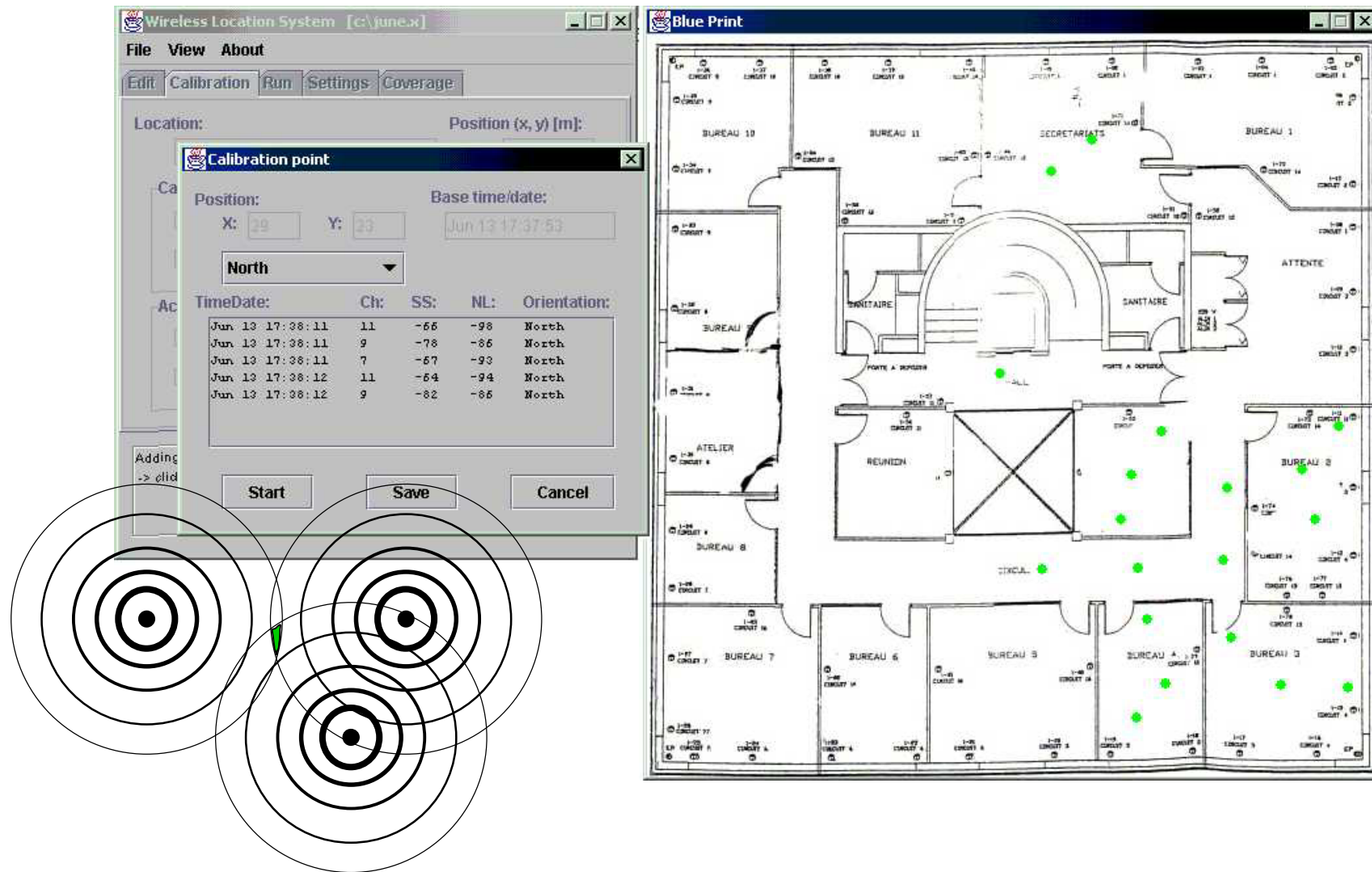
- Traces a visitor's actions
- Provides a visit progress view and a visit diary with associated documents



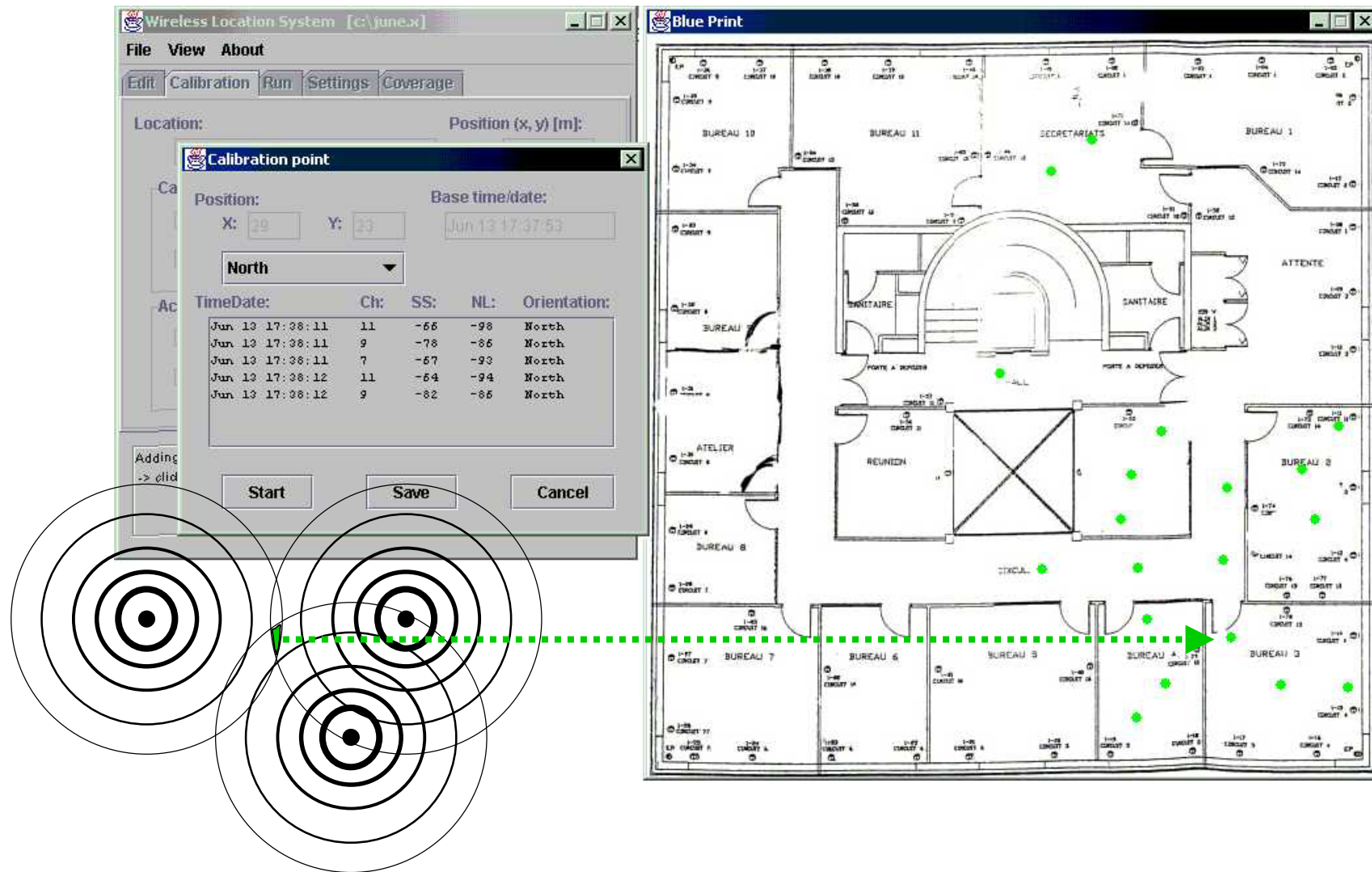
Position by WLAN Signal Strengths



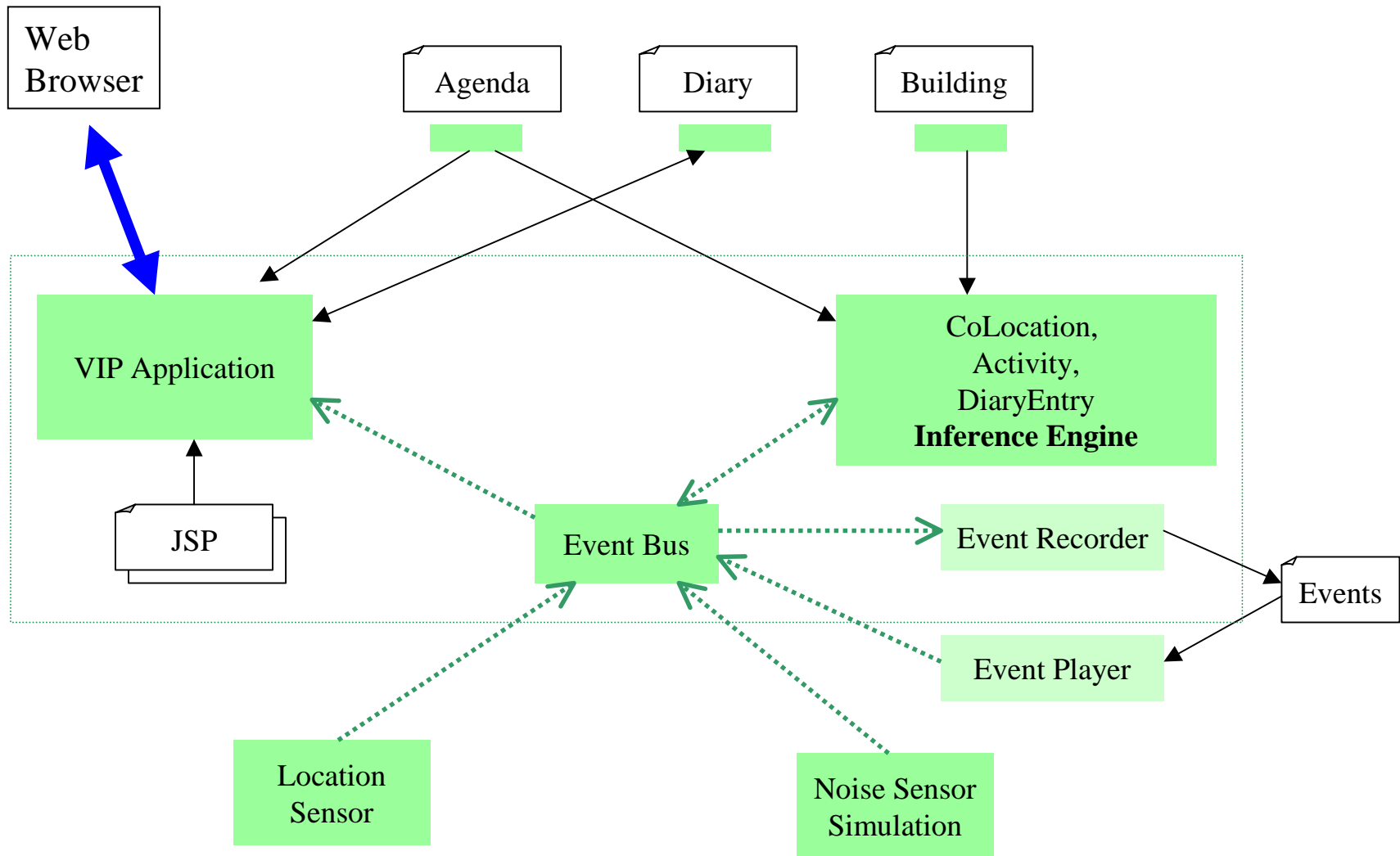
Position by WLAN Signal Strengths



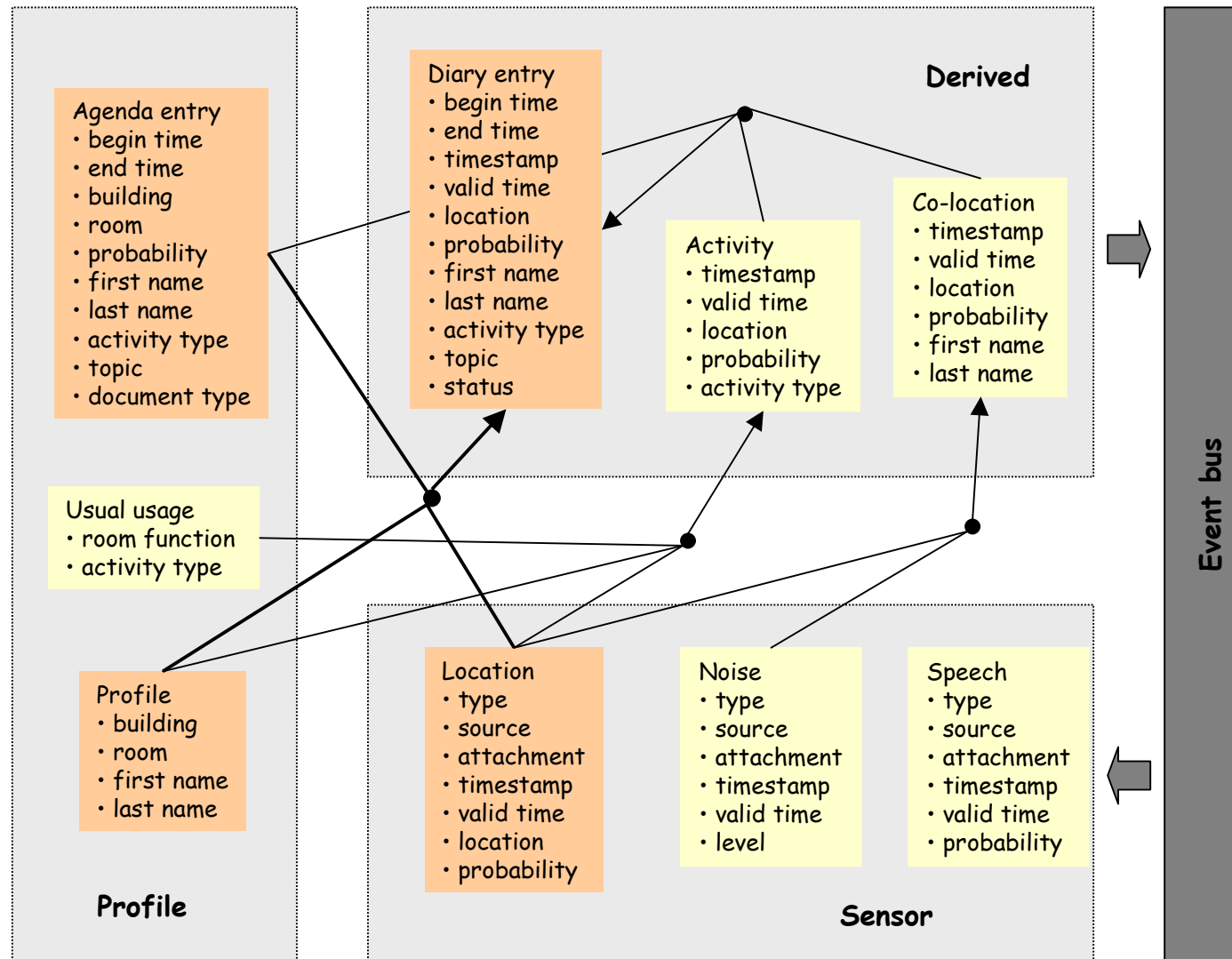
Position by WLAN Signal Strengths



VIP Components



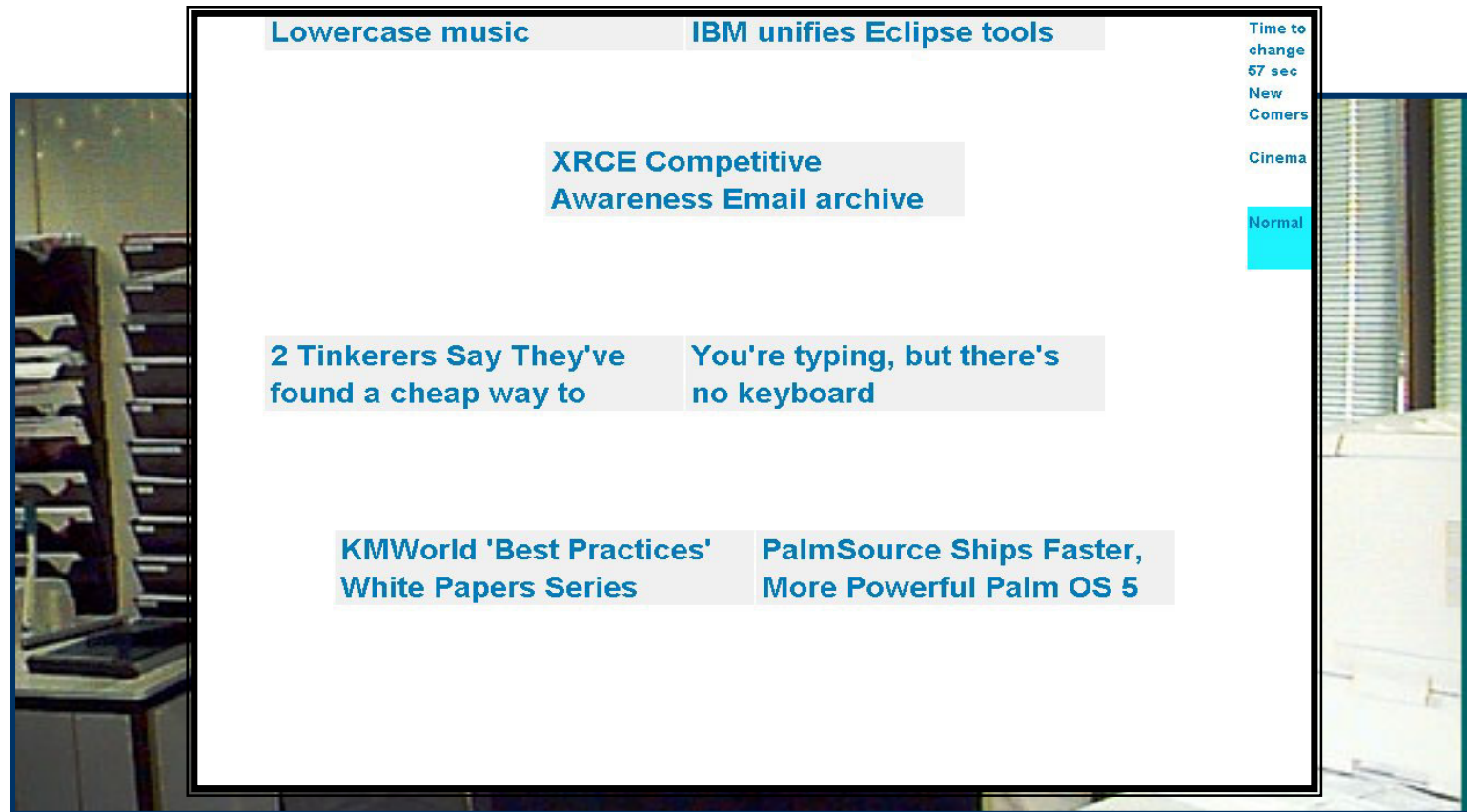
Inference Engine



MILK: Context-sensitive Community Wall



MILK: Context-sensitive Community Wall



MILK: Context-sensitive Community Wall

