

Contextual Adaptation

Doctoral Seminar

Ubiquitous Information

ETH Zürich, WS 01/02

Andrei Popovici

Being Aware of the Context means..

- <ProG> to react to changes in the *environment*
- <ProG> and *adapt* the *application* behavior accordingly
- <ConG> But what is the environment?
- <ConG> ..and what is the application?
 - maybe the application component (e.g., Netscape)?
 - or maybe the application **and** the operating system?
 - what happens in case of a distributed system?



<ProG>



<ConG>

Context Awareness Fact Sheet

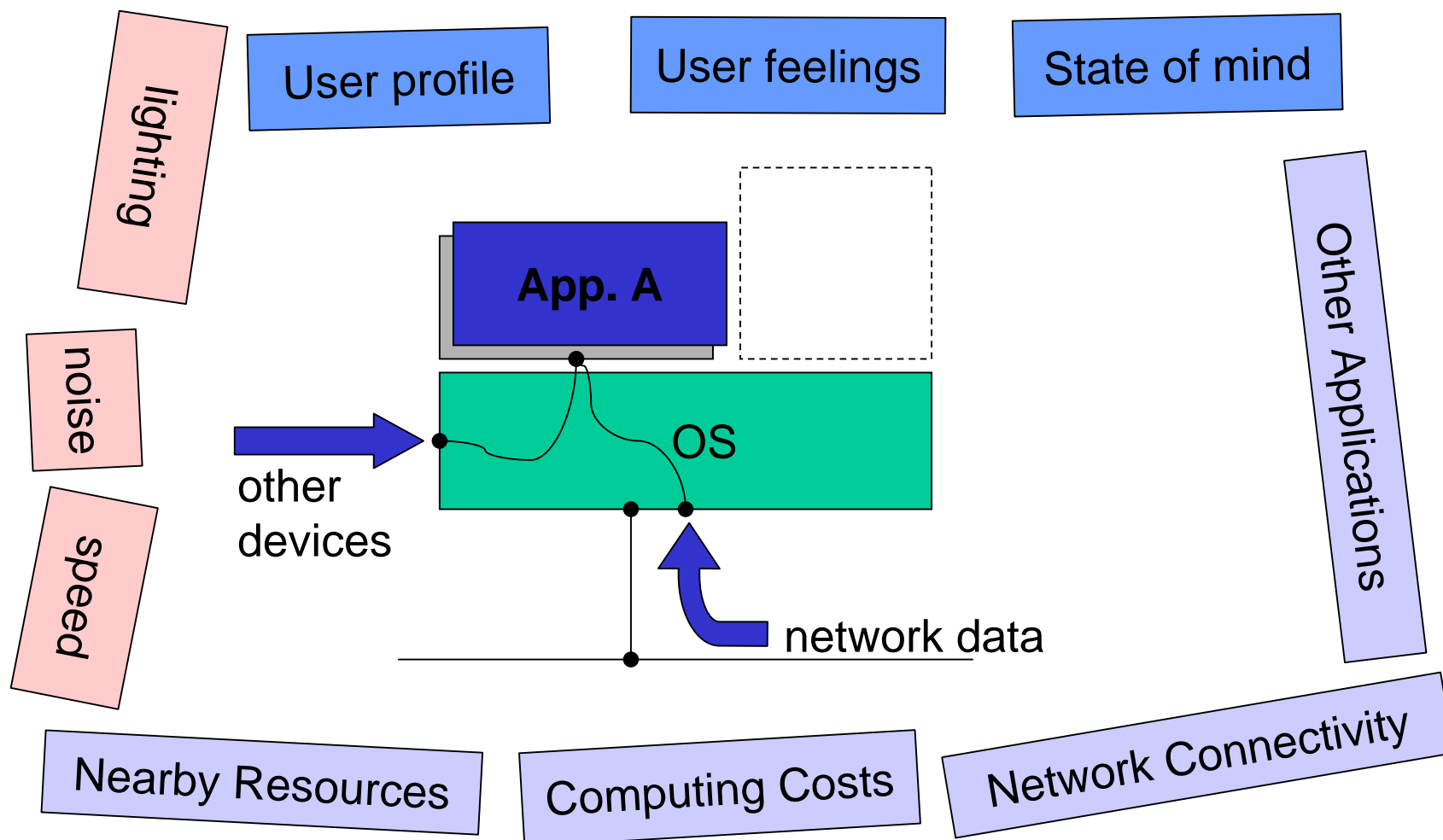
Term of Context Awareness	Bill Schilit '94 [SAW94]
It became a Buzzword	When computers became mobile
Origins and Idea	Human-Computer Interaction '80s
Problems	Vague, Everybody understands something slightly different under Ctx Awareness.

Outline

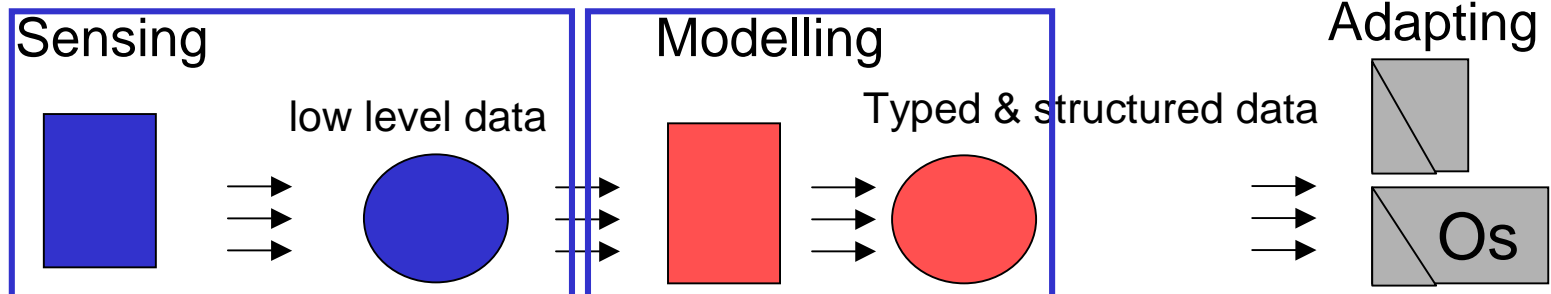
- Context awareness overview
- Adaptation in context awareness
- Application-aware adaptation
 - Idea
 - Techniques
- Run-time extension of services
 - Application aware networks
 - Application aware Jini networks

Awareness
Adaptation
App. Aware Nets

Application and Environment



**Awareness
Adaptation
App. Aware
Nets**



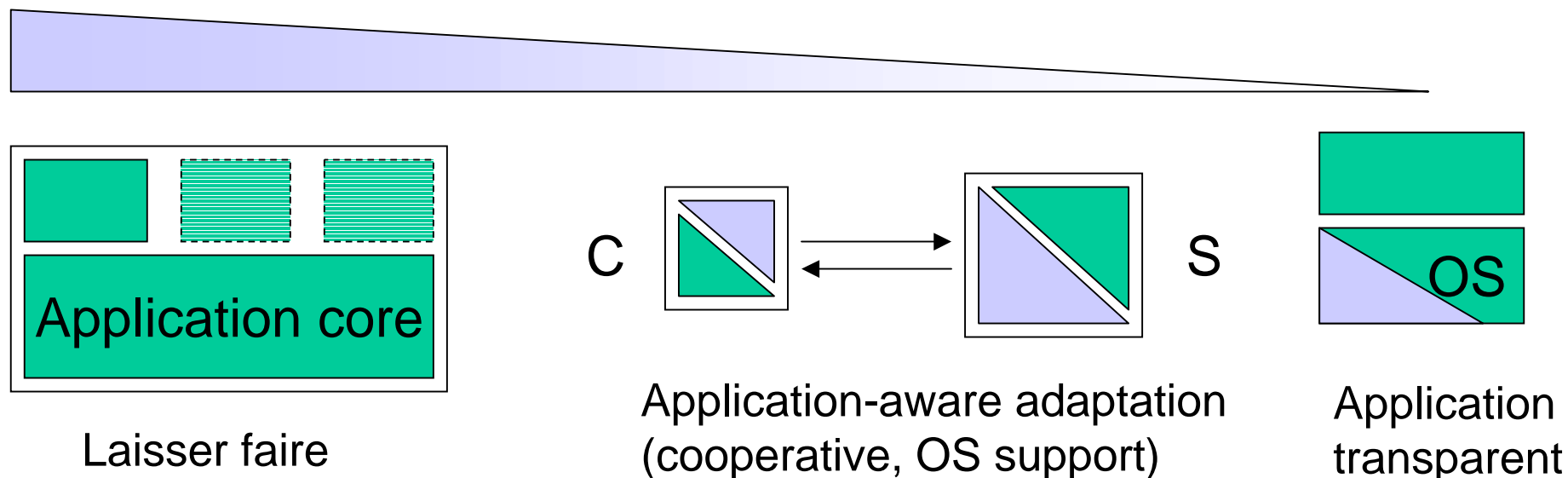
Goals	<ul style="list-style-type: none"> •Larger set of inputs •Accurate data 	<ul style="list-style-type: none"> •Better Abstractions •Tool support 	<ul style="list-style-type: none"> •Old: ctx transparency •New: ctx sensitiveness
Example	<ul style="list-style-type: none"> •Bandwidth •Location <ul style="list-style-type: none"> –Indoor –Outdoor (gps) •Exotica 	<ul style="list-style-type: none"> •Location <ul style="list-style-type: none"> –Symbolic –Geometric •Context Toolkit 	<ul style="list-style-type: none"> •Everybody •CMU <ul style="list-style-type: none"> –CODA –Odyssey
Technology	<ul style="list-style-type: none"> •Low-level •Hardware:rf/ir,other •Software:profiling/OS 	<ul style="list-style-type: none"> •Algorithms •Sound Modeling •Good SE 	<ul style="list-style-type: none"> •Passive •Active <ul style="list-style-type: none"> –Obvious (ifs) –Cooperative

➔ No killer application[ChKo00]

Ctx. Awareness
Adaptation
 App. Aware Nets

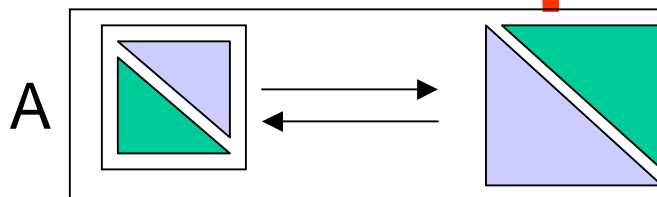
Adaptation

- *Passive* adaptation: display something
- *Active* adaptation: change behavior
 - <Con>: change behavior of WHOM?
- Classification (Satya)



Ctx. Awareness
Adaptation
App. Aware Nets

Application-aware adaptation



- Application contains a piece of OS functionality
- The OS receives Client/App specific features

Suitability with respect to mobility:

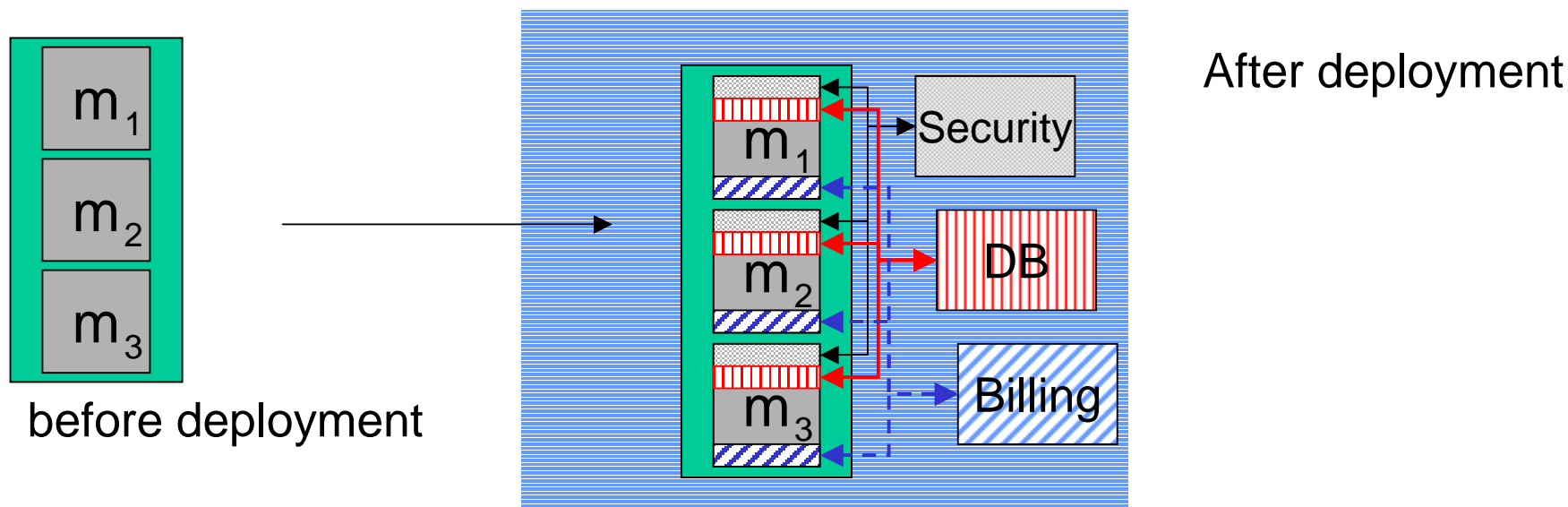
- Laisser faire: what could be foreseen by developers
- Application-aware: leads to real context-specific behavior

→ Extensible applications:

container technology/run-time environments

Ctx. Awareness
Adaptation
App. Aware Nets

Run-time environments -container technology-



Changes range from **generic** to **application-specific**:

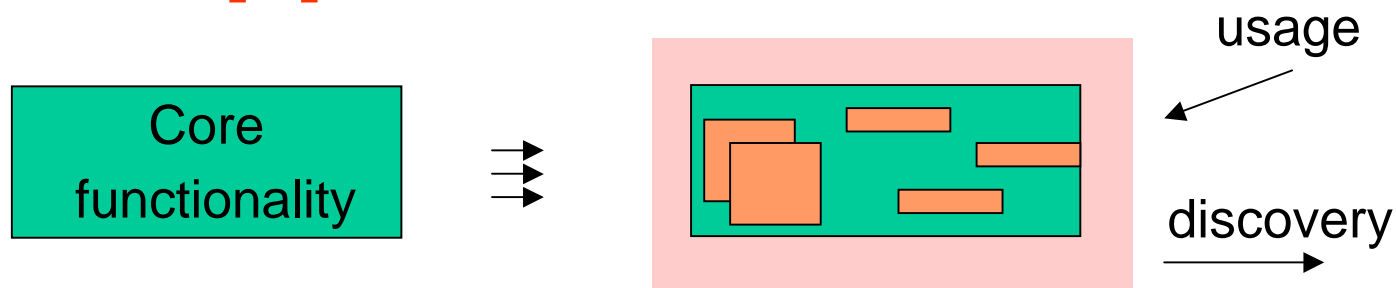
- e.g., EJB like (security, transactions, persistence)
- e.g., organization-specific billing

!!!Container-technology unfit for mobility!!!

➔ Make container technology fit for mobile nodes

Ctx. Awareness
Adaptation
App. Aware Nets

Application-aware nets



Powerful adaptation of container technology plus network awareness¹ of spontaneous networks.

- Defines enhancements for a whole community of nodes/applications of the same domain
 - Inserts functionality as applications join the community
 - Withdraws functionality when applications leave the community
- ➔ Platform for run-time Adaptation: PROSE

1. Network awareness in spontaneous nets \leftrightarrow passive context awareness

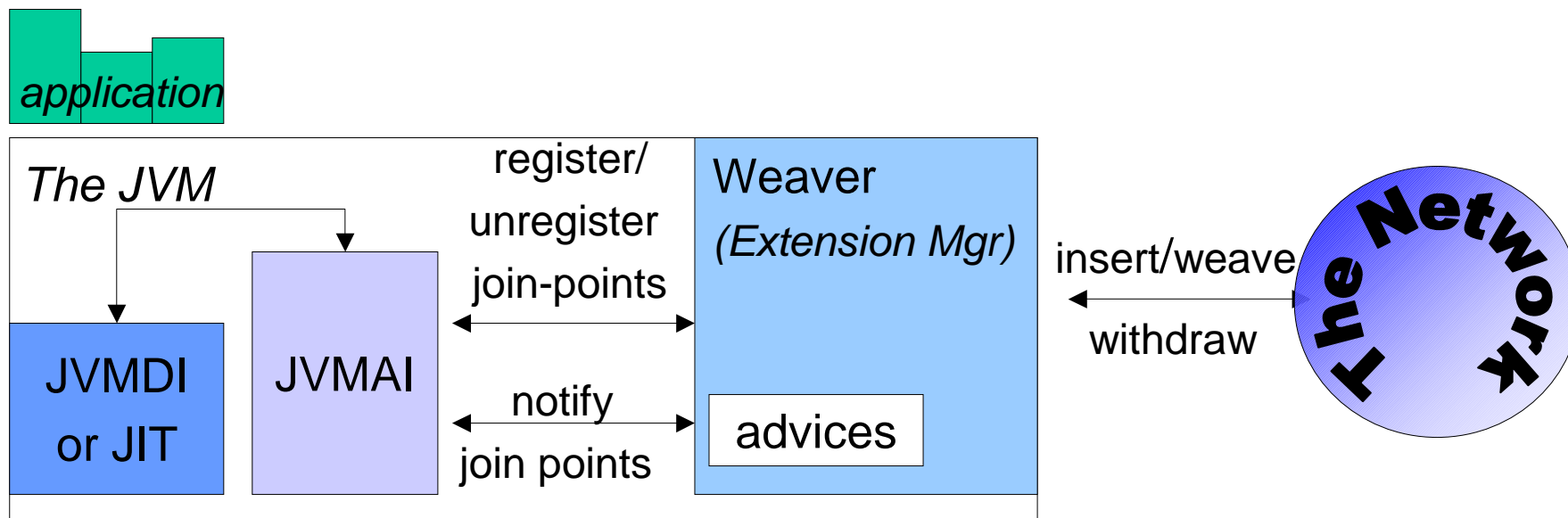
Ctx. Awareness
Adaptation
App. Aware Nets

PROSE

PROSE allows dynamic extensions of services

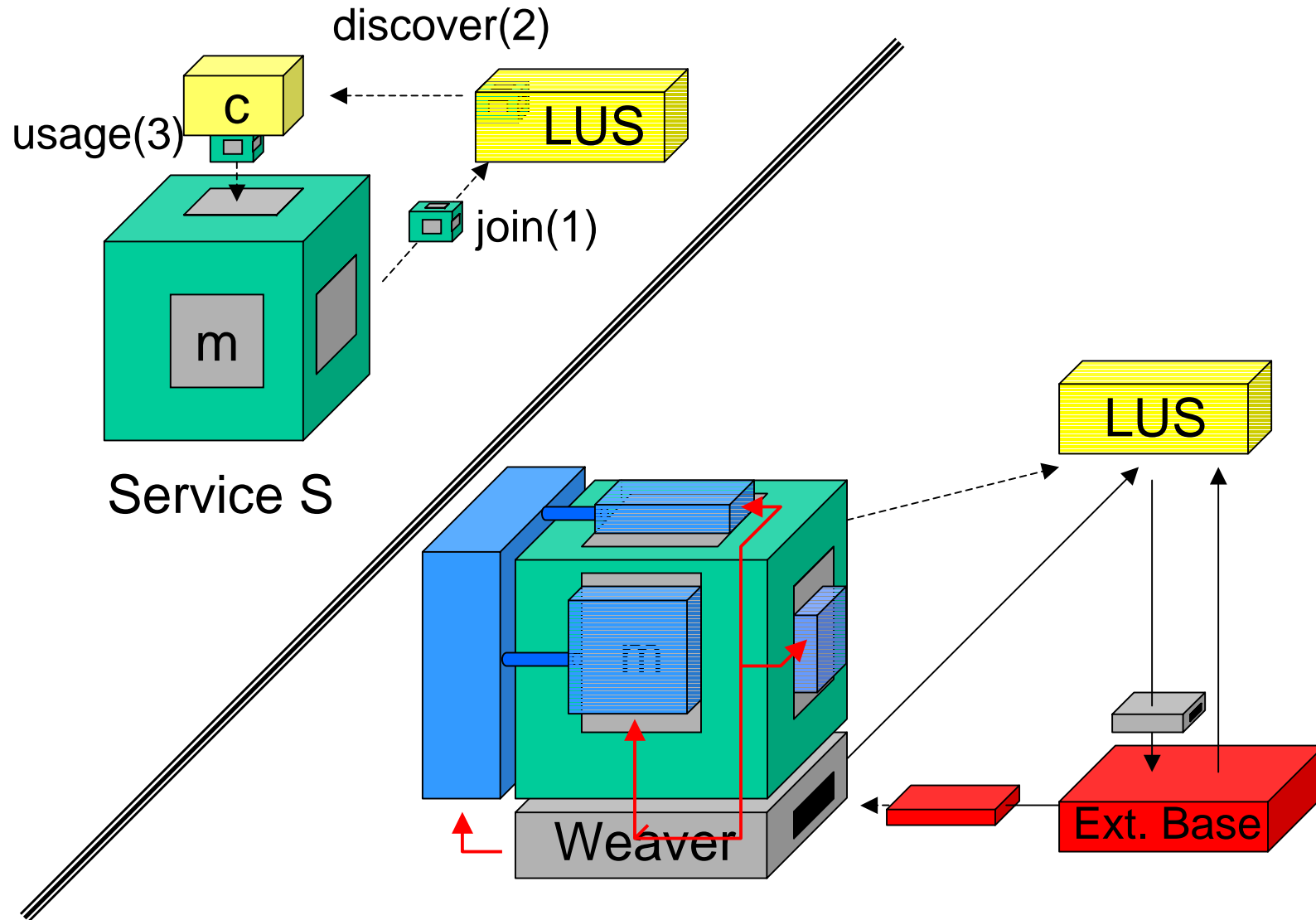
Generic extensions (AOP idea):

Add action **a** at the beginning of
(methods matching “**. *foo.+**”) and
(defined in classes that extend **Remote**) or (defined in class “**Bar.***”)



Application-aware JINI network 12/16

Ctx. Awareness
Adaptation
App. Aware Nets

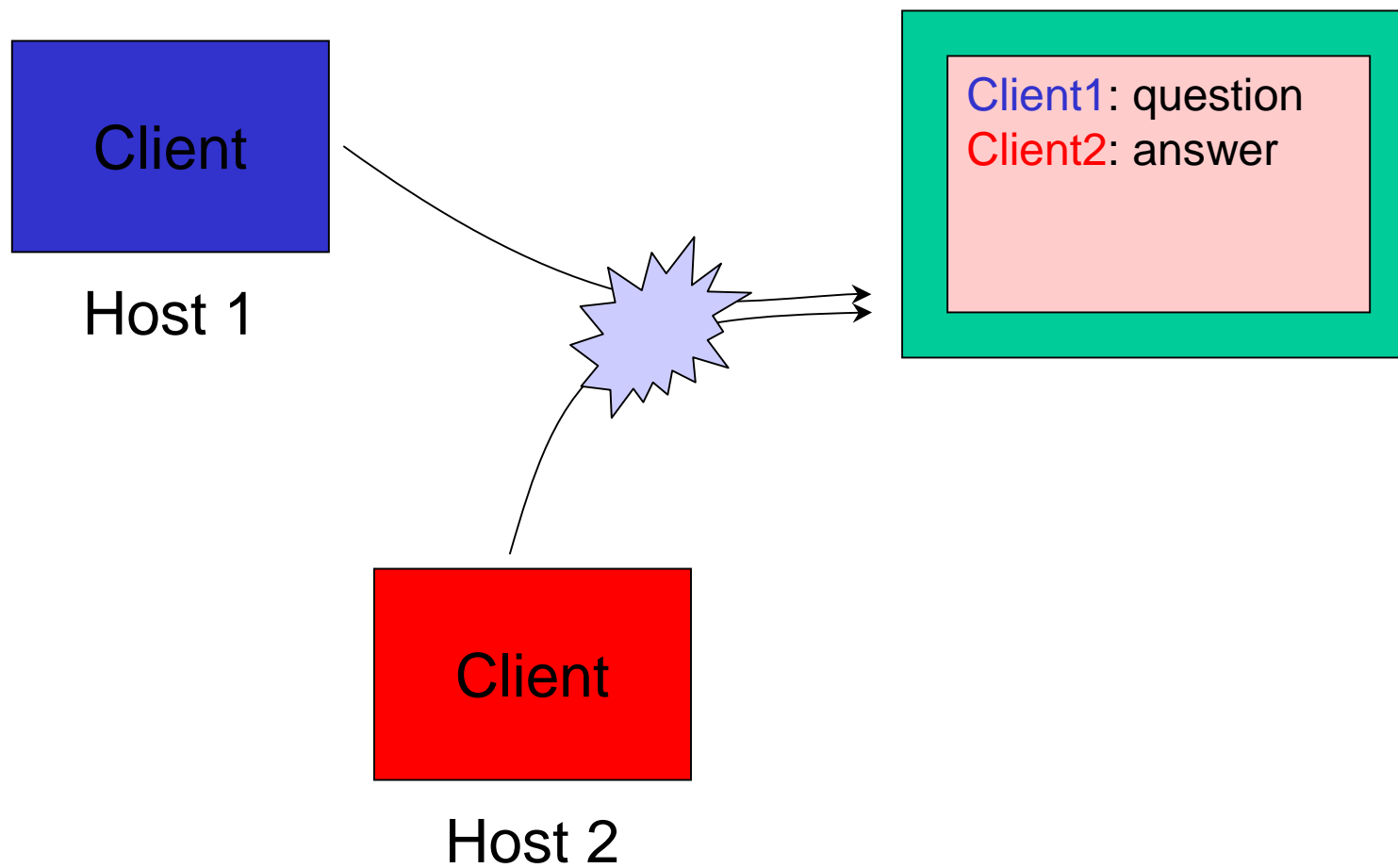


Application-aware network issues

- Security:
 - Extensions must be signed
 - Trust relationships
- Transient functionality
 - Added components are leased. When a node leaves a network, the leases expires and the added components are discarded.
- Performance
 - Adaptation must be fast, the added functionality must be executed without a major overhead.

Ctx. Awareness
Adaptation
App. Aware Nets

Demo 1



Demo 2



- A Jini/mindstorms environment:
 - remote controlled device as a Jini service
- Record what commands were issued, at what point in time, by whom
 - replay parts of the history
 - query the past
 - perform inverse operations

Some References

W94 B. Schilit, N. Adams, R. Want; *Context-Aware Computing applications*

NSN97 M. Satyanarayanan et.al; *Agile application aware adaption for mobility*

WSA96 R.Want, B. Schilit,...; *The ParcTab Ubiquitous computing experiment*

SBG98 A.Schmidt, M.Beigl,..; *There is more to context than location*

ChKo00 G.Chen, D.Kotz: *A suvery of Context-Aware Mobile Computing Research*